

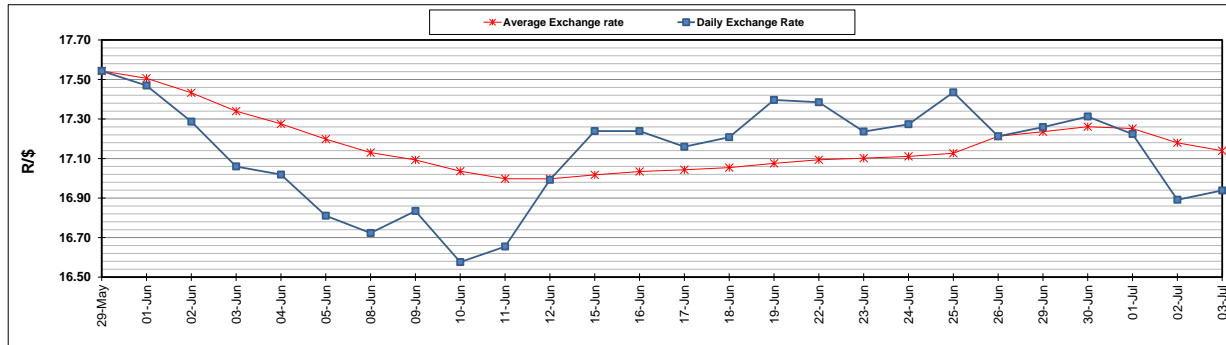
	PETROL 95 ULP	PETROL 93 ULP & LRP	DIESEL 0.05%	DIESEL 0.005%	ILL. PAR.
GAUTENG PUMP PRICE (SA c/l) AS FROM 01/07/2020	1,512.000	1,483.000	-	-	-
WHOLESALE PRICE (SA c/l) AS FROM 01/07/2020	-	-	1,303.560	1,307.960	703.828
SINGLE NATIONAL MAXIMUM RETAIL PRICE	-	-	-	-	882.000
BASIC FUEL PRICE - 03/07/2020 (SA c/l)	560.416	540.248	577.321	581.625	505.317
PRESS RELEASE CONTRIBUTION TO BFP 01/07/2020 - 03/07/2020 (SA c/l)	564.770	545.770	552.630	557.030	499.128
UNIT OVER/(UNDER) RECOVERY - 03/07/2020 (SA c/l)	4.354	5.522	(24.691)	(24.595)	(6.189)
AVERAGE BASIC FUEL PRICE 26/06/2020 - 03/07/2020	556.183	540.339	579.421	583.241	510.270
AVERAGE UNIT OVER/(UNDER) RECOVERY 26/06/2020 - 03/07/2020	(77.413)	(76.069)	(113.291)	(110.711)	(118.142)

ANALYSIS MOVEMENT OF AVERAGE OVER/(UNDER) RECOVERY

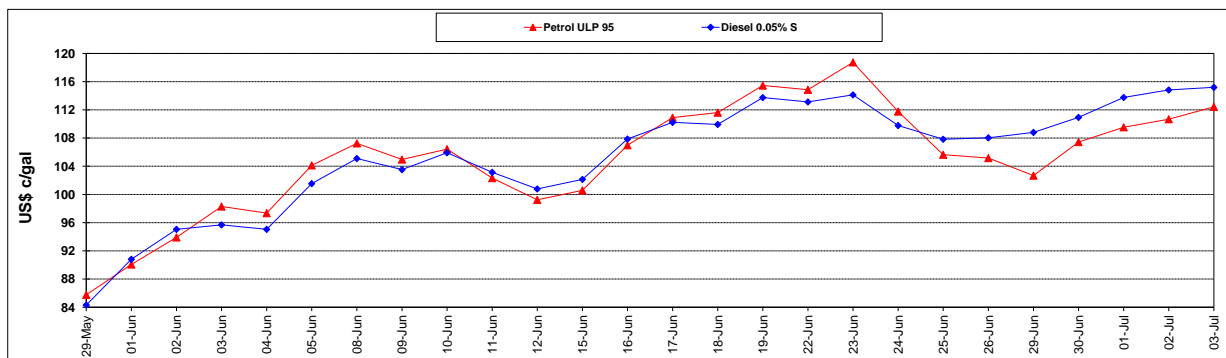
	PETROL 95	PETROL 93	DIESEL 0.05%	DIESEL 0.005%	ILL. PAR.
- MOVEMENT IN INTERNATIONAL PRODUCT PRICES	(77.007)	(75.675)	(112.868)	(110.286)	(117.770)
- MOVEMENT IN EXCHANGE RATE	(0.406)	(0.394)	(0.423)	(0.425)	(0.372)
AVERAGE UNIT OVER/(UNDER) RECOVERY 26/06/2020 - 03/07/2020	(77.413)	(76.069)	(113.291)	(110.711)	(118.142)

R/\$ EXCHANGE RATE - (R/\$16.9383 - 03/07/2020)

EXCHANGE RATE USED IN BASIC FUEL PRICE



INTERNATIONAL PRODUCT PRICES OF BASKET USED IN BASIC FUEL PRICE



BASIC FUEL PRICE IN SA CENTS PER LITRE

